



MACRO RESET STORE LAYOUT PROJECT

Case Study: SmartSpace® Solution – Health Food Stores

A chain of health food shops required a **macro reset store layout** to be able to incorporate a chiller cabinet to all stores

MACRO RESET STORE LAYOUT PROJECT

Case Study: SmartSpace® Solution – Health Food Stores

A multinational chain of health food stores required the support of RGIS. The retailer has over 1,300 stores in 16 countries, including a substantial presence in the United Kingdom, Republic of Ireland, Netherlands, Belgium, Mainland China, Hong Kong, India, Saudi Arabia and UAE. Within the UK the health food store chain has 800 shops.



REQUIREMENT

The chain of health food stores was already a customer of the RGIS SmartSpace® software, and required the additional support of RGIS. The retailer needed to **complete a macro reset store layout project** to help to **re-flow almost 800 shops** using the RGIS software, to enable a chiller cabinet to be incorporated within the stores.

The retailer required RGIS to provide the following:

- **Update CAD drawings** with SmartSpace® data for each individual store layout
- Ensure the project was **completed by a certain date**
- **National coverage** to enable all stores to be completed



SOLUTION

The chain of health food stores partnered with RGIS to complete the **SmartSpace® macro reset store layout project**, and RGIS provided the following:

- RGIS teams prepared a **plan of action** before the project went live
- Scheduled an **experienced RGIS store layout services team** to **re-flow all the UK stores** to reset the stores to have a chiller cabinet based on the rules provided



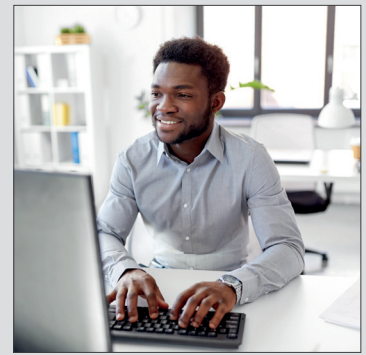
RESULTS

The chain of health food stores found by outsourcing the **SmartSpace® macro reset store layout project** to RGIS, the following results were achieved:

- **Updated CAD drawings** for all stores with the SmartSpace® data which were **delivered by the goal dates**
- The **customer was very satisfied** with the service provided by RGIS, as the project was completed quicker than using in-house teams
- The chain of health food stores continue to use the **RGIS store layout services team** to make further alterations to their store layouts where necessary



By partnering with RGIS, the chain of health food stores had all **shop layouts reset to include a chiller cabinet**, within a short timeframe, using SmartSpace®



© 2022 RGIS. All rights reserved.
RGIS_CS_0319_01

SmartSpace®



Updated Stores



Delivered on Time



Satisfied Customer



CONTACT **RGIS** TODAY TO SEE HOW **WE CAN HELP YOU**

✉ | salesireland@rgis.com

☎ | +353 (0)1963 0401

🌐 | www.rgis.ie

RGIS